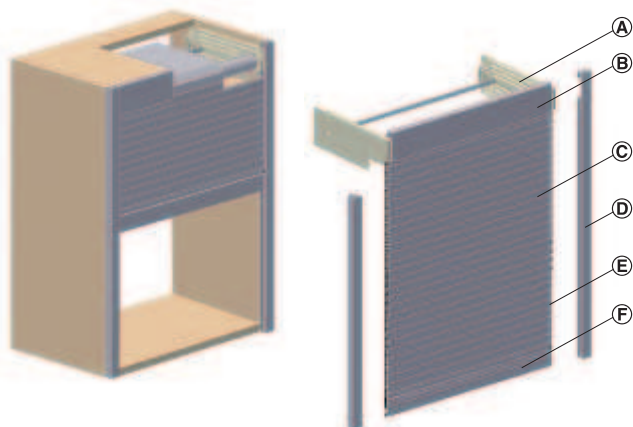


Tambour door versions A1, A2, A3 module

A

Quick and easy to install tambour door module with guide profiles



- A** Shutter housing guide
- B** Panel
- C** Roller shutter
- D** Guide profile
- E** Glide plate
- F** Handle profile

TopCo Services

The following features can be selected individually:

- Internal cabinet width
- Internal cabinet height
- When ordering powder coated finish: RAL colour
- Number of tambour door modules
- With / without cabinet base
- Lock, handle or inset handle
- Running direction vertical or horizontal
- Motor (a motor drive is possible from an internal cabinet width of 600 mm and above)

<ul style="list-style-type: none"> • Material: • Weight: • Running direction: • Profile height: • Profile thickness: • Handle: • Version: • Installation: • Motor drive: 	<p>Profile: Extruded aluminium, glide plate: Plastic, spring-loaded shaft: Steel and aluminium</p> <p>With profile height 18 mm: 8.5 kg/m², with profile height 24 mm: 6.0 kg/m²</p> <p>Vertical or horizontal</p> <p>18 or 24 mm</p> <p>With glide plate 10 mm</p> <p>Height 66 mm, same thickness as shutter profile</p> <p>Tambour door module ready for installation, for front hung or inset installation with screwed-on guide profiles and shutter housing guide</p> <p>Slide module into the cabinet and install guide profiles</p> <p>Possible from an internal cabinet width of 600 mm and above</p>
---	--

For cabinet dimensions

Profile height mm	Internal cabinet width mm	Internal cabinet height mm
18	382 – 460	300 – 800
	461 – 1500	300 – 1850
24	382 – 460	300 – 1000
	461 – 1600	300 – 1850

Other dimensions on request.

Minimum installation depth

Internal cabinet height mm	Min. internal depth mm
up to 1150	300
up to 1550	380
up to 1850	440

Order reference

Vertical

Downwards closing



Upwards closing

Note:

Only in combination with extending rod lock or motor drive



Horizontal

Closure direction

Left



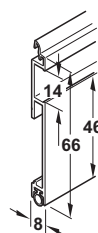
Closure direction

Right



Closure direction

Left and right

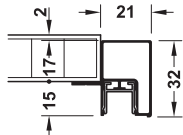
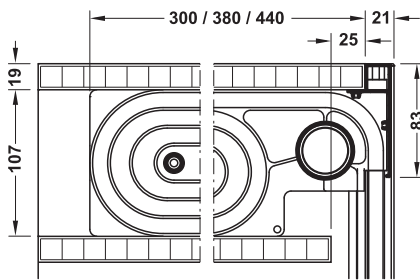


S66 handle profile

Shutter guide installation

A1 module

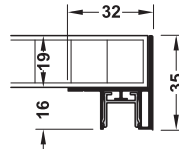
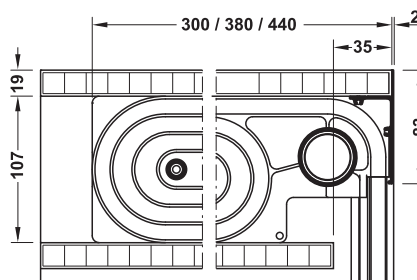
Front hung installation



F1 guide profile

A2 module

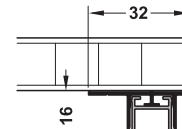
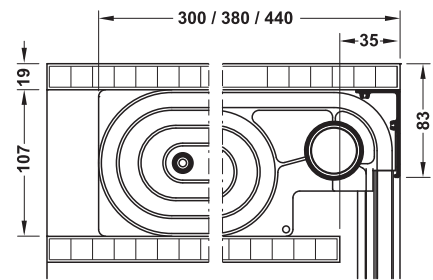
Inset installation



F2 guide profile

A3 module

Inset installation without edge cover



F3 guide profile

Note

A tambour door motor drive is possible from cabinet widths of 600 mm and above.

Finish	Profile height mm	Profile type	A1 module	A2 module	A3 module
Silver coloured anodized (E6/EV1)	18	Single-walled, smooth	443.05.900	443.06.900	443.07.900
	24	Single-walled, smooth	443.05.910	443.06.910	443.07.910
	24	Groove design	443.05.920	443.06.920	443.07.920
Ground, stainless steel coloured, anodized	18	Single-walled, smooth	443.05.000	443.06.000	443.07.000
	24	Single-walled, smooth	443.05.010	443.06.010	443.07.010
Powder coated in RAL colours	18	Single-walled, smooth	443.05.600	443.06.600	443.07.600
	24	Single-walled, smooth	443.05.610	443.06.610	443.07.610
	24	Groove design	443.05.620	443.06.620	443.07.620

Packing: 1 set

→ **Optional accessories**

	Cat. No.
Cam lock	235.88.720
Roller shutter rim lock	232.30.620
Extending rod lock (pre-assembled if ordered together with lock strip preparation 442.70.089)	237.76.620

Packing: 1 or 20 pieces

Order reference

Doors with horizontal closing direction left and right with centre closing only possible in combination with the extending rod lock. A striking plate is not required for the extending rod lock, the bolt locks laterally into the guide profile.

Lock strip preparation

► FF 9.159